



# Living Lord's Voice

Living Lord Lutheran Church  
(941) 753-9365  
[www.livinglordfl.org](http://www.livinglordfl.org)

Volume 24, Number 11  
November 2011



## From the Pastor's Desk:

November is here, with November comes Thanksgiving and with Thanksgiving comes the Holiday Season. We are officially "in the holiday groove." Our senses are heightened "in the holiday groove," to the needs of members of our community who cannot afford a Thanksgiving and/or Christmas feast. It seems that we, as a community, should respond.

GOOD NEWS! On November 6<sup>th</sup> Living Lord Lutheran Church is hosting the second annual "Be Neighborly' Thanksgiving Service." The ELCA congregations in Manatee County, which are Trinity, Redeemer, Gloria Dei and Living Lord will be asking members of their congregations to make contributions that will enable 200 families to celebrate the holidays with a feast. The Youth Groups from each congregation will be assembling these meals for distribution. Family Partnership will distribute these meals to hurting families, and we will gather for a worship service that will include all four congregations at 2:30 in our sanctuary.

As an ELCA pastor in Manatee County, I know and love my fellow pastors. I know that ELCA Lutherans in Manatee County are very blessed. I want you to know just how blessed we are. I think you will be amazed. It is exciting when we can come together to worship and fellowship with each other. I know that you will not be disappointed.

What do we need? We need 200 cans of cranberry and 200 boxes of stuffing. That is Living Lord Lutheran Church's contribution. You can bring them in any time, in fact, the sooner the better. We also need you to join us for worship at 2:30. This is an exciting opportunity for Living Lord Lutheran Church. This is a chance for us to "Be Neighborly,' not only with our fellow Lutherans, but also with our neighbors. We send a message to our community, Manatee County, which is "we care!"

In Christ,

Pastor Jeff

From Your Council President,

## **SWISS CHEESE**

I had a great aunt who would tell my grandmother not to buy Swiss cheese because you are paying for the holes. Of course I don't subscribe to her philosophy but do know in other aspects of our lives holes do need to be filled. Any Church or Organization of volunteers will always have places where someone is needed to fill a position, (hole) for the Church or Organization to be WHOLE. Living Lord will have at least 3 holes to be filled on the Council for next year for your Council to be whole. There are several of the Teams that have holes to be filled so the many programs and activities can be fulfilled with your willing hearts and hands. Do you have a little hole in your time that can be filled with activities to benefit Living Lord and the community served by your Church? Please come forward and let's make the SWISS CHEESE a complete whole piece of cheese. In the Sunday Bulletin is a list of your Council members and Team leaders, step forward and fill the hole by contacting one or more of them. I like Swiss cheese but a complete piece of American cheese is my preference.

**Randy Hanson, Council President**

## **Christmas Gift Cards**

Planning to give gift cards to family and friends at Christmas? There are only 2 more order dates before the holiday: **November 13<sup>th</sup>** and **December 4<sup>th</sup>**. Stop by the scrip window and pick up an order form. Our volunteers will be happy to help you pick out the perfect cards to give as gifts. Kids and teens especially love gift cards because they can shop and pick out exactly what they want. Don't forget teachers, delivery people, salon workers, dog groomers, pet sitters...all those people who make our lives a little easier every day. We have a variety of \$10 and \$25 cards that would be perfect for them.

Over the past two years, prepaid Visa cards have been a popular gift. As of now, Visa is unable to commit to selling the cards again, due to changes in the credit card laws. We do have American Express cards available for order (they do not operate under the same credit card laws). We'll keep you posted and put out an announcement if the Visa cards become available. In the mean time, stop by the scrip window after service and see what we have to offer...there are several hundred merchants and retailers that participate in the scrip program. You're bound to find cards that would make perfect gifts for the special people in your life!

## GET TO KNOW OUR NEW MEMBERS!

In last month's *VOICE*, we got to know John and Shelley Sprecht and Nadine Angus, some of our new members who joined on October 2nd, a little more. In this month's edition, we would like to introduce some other folks who joined our church family along with them.

### Bob and Donna Anderson

Bob and Donna are originally from Chicago. In their early twenties, they married and began a lifetime in academics. College was so much fun, they never wanted to leave! As a result, they attended universities in Illinois, Texas and Florida. In 1971, they moved to Tampa where they were professors at the University of South Florida. Donna has a Ph.D. in counselor education and is a Licensed Mental Health Counselor (retired). Bob has his Ph.D. in marketing and finance and was also dean of the College of Business on the Tampa campus. Four years ago, he tried retirement but failed. He now is dean of the College of Business at USF Sarasota-Manatee. Hopefully, he will retire again someday.

Because of their careers, they have lived and taught in Paris, Mexico, Wales and the Ukraine. They continue to travel whenever possible. When they relocated to Bradenton, they purchased a home in River Club and now enjoy the tranquility after the hustle and bustle of Tampa. They are blessed with a son, daughter, son-in-law and four grandchildren. All live in the Tampa Bay area.

Living Lord Lutheran Church is part of their new beginning.

10022 Cherry Hills Avenue Circle  
Lakewood Ranch, FL 34202  
(941) 388-8394  
Danderson242@tampabay.rr.com

### Mark and Janice Dahlstrom

Mark and Jan live in Kenosha, Wisconsin in Spring, Summer, and Fall with winters in Sarasota. A daughter and son and their families live in Minneapolis, MN. A second son and his family live in Kenosha. A total of 8 grandchildren keep the Dahlstroms busy.

Both Mark and Jan retired from the Kenosha school system; school psychologist and reading/resource teacher respectively. Mark continues work teaching psychology classes at Carthage College.

Favorite pastimes include golfing, walking, reading, and activities with family and friends.

5527 Wedgewood Lane  
Sarasota, FL 34235  
262-331-3824

### Nadine Angus

5707 45<sup>th</sup> Street, #10  
Bradenton, FL 34203  
(941) 751-2421

### Jon and Rachael Root

4032 Day Ridge Place  
Ellenton, FL 34222  
(941) 531-4722  
Rroot4@yahoo.com

### Carolyn Schwarzbauer

Anja and Emma  
6357 Royal Tern Circle  
Lakewood Ranch, FL 34202  
(941) 870-5500  
xenson@yahoo.com

Thomas M and Gay Jefferys  
15819 Clearlake Avenue  
Lakewood Ranch, FL 34202  
(941) 907-8806  
tmjefferys@yahoo.com

Ralph and Nancy Woodworth  
106 Lazy Avenue  
Bradenton, FL 34208  
(941) 201-4457



Pastor Jeff blesses one of the many animals in attendance at this year's Blessing of the Animals event on October 1st.

**Don't miss this chance to opt in early for the opportunity to grow in your Christian faith, gain new friendships, and link up with other members of Living Lord**

Have you heard enough about the formation of "Christian Life Groups" to make a decision that you want to participate? If so, this is your chance to opt in early, as we think the demand will far outstrip the number of available spots ( if each group facilitator has a total of ten people in their home, that adds up to 41 available spots).

You can sign up at Sunday at service or call the church office at 941-753-9365.

# WALL NEWS

“Where God leaves his mark!”

## UPCOMING YOUTH GROUP EVENTS

### November Events

November 6 Thanksgiving Boxes 12:00-4:00

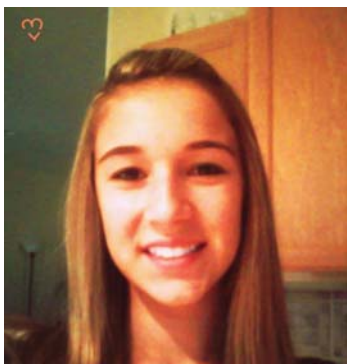
November 13 Pancake Harvest 8:30-10:30

November 20 Middle and High school youth group

### WHAT DOES WALL MEAN?

I've had a lot of questions recently about the kids and their new youth group shirts. WALL is an acronym and it stands for Wild About Living Lord. A special thanks to Quentin Murphy for the design of the t-shirts and to Michele Bohlmann for the phrase, “Where God leaves his mark!”

## MIDDLE SCHOOL SPOTLIGHT



Shannon is 12 years old and in the 8<sup>th</sup> grade at Nolan Middle School. Some of her favorite things to do are read, text and hangout with friends. When she grows up she wants to be a doctor. Shannon is most looking forward to going to high school next year. If she could change anything in our world she would get rid of war.

October was a busy month for the youth group.

On October 1st you would have seen them serving food at the Blessing of the Animals event.

October 14-16, Jackie Riordan and Kristen Hitchcock took 10 of our confirmation youth to Luther Springs for a wonderful confirmation retreat.

Many of the youth were serving at Hunsader Pumpkin Festival for all 3 weekends.

Congratulations to Elizabeth Lustgarten, Heather Greendonner and Jessica Seminick on their Confirmation Sunday October 30<sup>th</sup>.

**Council Meeting Minutes**

Living Lord Lutheran Church

October 11, 2011

Council Minutes

Members present: Randy Hanson, Randy Griffith, Tom Widmann, Pastor Jeff, Sue Farence, Ernie Ovitz, Bob Daly, Todd Bohlmann, Kristen Hitchcock, and Cheryl Graham.

Absent: John Moyer and Mel Lestock.

Visitors: Bea Daly, Jim Gross, and Gary Graham.

President called the meeting to order at 7:00 pm. Pastor Jeff opened with a prayer.

**A. Reports:**

1. The Council minutes were approved.
2. The treasurer's report was discussed and approved.

**B. Pastor's Report:**

1. Pastor discussed the importance and necessity of having a retreat. A retreat should have goals and we need to keep these goals moving forward after the retreat. These objectives need to be carried out, not let die and be dismissed after a short time. There was a lengthy discussion on what can be accomplished at a retreat.

2. November 6th, 3 Lutheran Churches are joining Living Lord for Thanksgiving Day worship. The 4 Lutheran Churches are going to supply 200 families with food for a Thanksgiving dinner. Our Youth group is packing the food. Thrivent has offered to give funds to purchase turkeys. We are to furnish 200 boxes of stuffing and 200 cans of cranberry sauce. The 3 Lutheran churches to help with the food bags are, Gloria Dei, Trinity & Redeemer.

**C. President's Report:**

1. Our Church will be hosting the Mid Gulf Conference on October 15, 2011. A light breakfast will be served and after the meeting lunch.
2. Annual congregation meeting will be held January 29, 2012.
3. All team leaders are to get their budgets into Sue ASAP.
4. Jim Gross & Gary Graham gave an update on the French doors the Scrip program is purchasing.
5. New members were approved. List of new members will be with the minutes.

**D. Youth:**

1. Ernie Ovitz gave a report on the youth's upcoming projects.

Report filed with the minutes.

**E. All God's Children:**

Bob Daly reported the school has 1 new student, now 38. The school is down in attendance this year.

Jeri, head of All God's Children was married on October 8, with Pastor officiating.

**G. Old Business:**

1. The sign is moving forward. We are waiting for a permit to cut down the 3 trees.
2. The Church is doing a new evaluation paper for each of our employees.

**H. New Business:**

1. Bob Daly suggested a contest to name the new fellowship room.
2. Cheryl Graham showed ceramic tile to be put in the Narthex. Mark Eckstrom can get tiles for \$.65 a square ft.
3. Bea Daly brought to the attention of the council, when the youth group are on a trip and have a vehicle break down what are they expected to do. Synod requires a policy for the youth and a contact group to help if this ever happens. Bea Daly and Jim Gross are going to look into this.

The Church council adjourned at 8:45 with the Lord's Prayer.

Respectfully submitted,

Cheryl Graham



# November 2011

Sun	Mon	Tue	Wed	Thu	Fri	Sat
<p><b>6</b> Church Services 8am, 9:15am and 10:45am Thanksgiving Boxes Service 12:30</p>	<p><b>7</b> Bible Study 10:30 MahJong 1pm Boy Scouts 7pm Chorus 7:30pm</p>	<p><b>1</b> Team Night 7pm Promises—AA Mtg 7pm</p> <p><b>8</b> Ladies Bible Study 11 Sewing 1pm Council Meeting 7pm Bethlehem Mtg 7pm Promises—AA Mtg 7pm</p>	<p><b>2</b> Bible Study 1pm Evangelism Mtg 2pm Youth Group 6:30pm Men's Ministry 7pm</p> <p><b>9</b> Bible Study 1pm Youth Group 6:30pm Men's Ministry 7pm</p>	<p><b>3</b> BUDS 7pm By Grace Rehearsal 6:15pm Choir Rehearsal</p> <p><b>10</b> Lunch Bunch Girl Scouts 4 By Grace Rehearsal 6:15pm</p>	<p><b>4</b> Journeys—AA Mtg 6pm</p> <p><b>11</b> Journeys— AA Mtg 6pm</p> <p><b>18</b> Faith Comm Nursing Mtg 1:30pm Journeys—AA Mtg 6pm</p> <p><b>25</b> Journeys— AA Mtg 6pm</p>	<p><b>5</b></p> <p><b>12</b> Work Day 8am Sunday School Family Event</p> <p><b>19</b> Fellowship Dinner at Square 1 6pm</p> <p><b>26</b></p>
<p><b>13</b> Church Services 8am, 9:15am and 10:45am Youth Pancake</p>	<p><b>14</b> Bible Study 10:30 MahJong 1pm Boy Scouts 7pm</p>	<p><b>15</b> Promises—AA Mtg 7pm</p>	<p><b>16</b> Bible Study 1pm Youth Group 6:30pm Men's Ministry 7pm</p>	<p><b>17</b> By Grace Re- hearsal 6:15pm Choir Rehearsal 7:45</p> <p><b>24</b> By Grace Re- hearsal 6:15pm Choir Rehearsal 7:45</p>	<p><b>23</b> Bible Study 1pm Youth Group 6:30pm Men's Ministry 7pm</p>	<p><b>30</b> Bible Study 1pm Evangelism Mtg 2pm Youth Group 6:30pm</p>
<p><b>20</b> Church Services 8am, 9:15am and 10:45am Photos 12-3</p>	<p><b>21</b> Bible Study 10:30 MahJong 1pm Boy Scouts 7pm</p>	<p><b>22</b> Sewing 1pm Promises—AA Mtg 7pm</p>	<p><b>29</b> Promises—AA Mtg 7pm</p>	<p><b>27</b> Church Services 8am, 9:15am and 10:45am</p>		

**Living Lord Celebrations!**

We wish all these people a Happy Birthday or  
Happy Anniversary during November 2011!

**BIRTHDAYS**

Baesman, Richard	29-Nov
Behrends, Keith	27-Nov
Brown, Brian	3-Nov
Brown, Hunter	4-Nov
Burner, Sherry	2-Nov
Copeland, Susan	12-Nov
Cross, Ellen	28-Nov
Gallagher, Janet	15-Nov
Griffith, Pam	8-Nov
Gross, Nicole	6-Nov
Guenther, Evelyn	6-Nov
Ireland, Sherry	17-Nov
Johnson, Gary	24-Nov
Kitchie, Karen	4-Nov
Krahn, Bettina	11-Nov
Langsen, Kate	20-Nov
Lanier, Thomas	27-Nov
Mantone, Brooke	26-Nov
Meuser, Betty	6-Nov
Murphy, Greg	23-Nov
Murtland, Gary	30-Nov
Nicholson, Kate	25-Nov
Novotny, Ann	25-Nov
Okland, Rasmus	22-Nov
Ovitz, Linda	21-Nov
Perseo, John	15-Nov
Pope, Darrell	21-Nov
Quaid, Dylan	15-Nov
Querido, Norma	17-Nov
Raddatz, Roger	3-Nov
Suprina, Barbara	24-Nov
Swartzendruber, Andrew	13-Nov
Trompke, Tamara	4-Nov

**Mark Your Calendar!**

**Sunday, February 12, 2012 at 3pm**

**"Music For a Sunday Afternoon"**

**Presented By**

**Chancel Choir, "By Grace" Praise  
Band, & Chime Choir**

**Plus More!**

**ANNIVERSARIES**

Matt & Anne Davis	11/29/1997
William & Karen Hansing	11/29/1964
Thomas and Lindsay Lanier	11/22/2007
Jim & Linda Lustgarten	11/24/1990
Arnold & Rita Schaus	11/16/1973
Jerry & Sue Tomasso	11/5/1988
Skip and Barb Wegener	11/5/1988



**PROPERTY  
WORK DAY**

**Come out on Saturday,  
November 12th and help  
spruce up the church grounds.**

**If you can't help this month,  
there is a property work day on  
the second Saturday of every  
month.**

## Treasurer's Report by Sue Farence

The total net financial position for Living Lord Lutheran Church as of September 30, 2011 is:

	<u>Jan - Sep 2011</u>	<u>Budget</u>	<u>\$ Over Budget</u>
<b>Overview</b>			
Church Receipts	261,590.29	259,741.62	1,848.67
Church Disbursements	263,590.26	285,557.09	-21,966.83
<b>Net Church Financial Position</b>	<b>-1,999.97</b>	<b>-25,815.47</b>	<b>23,815.50</b>
AGC Receipts	111,707.52	122,500.00	-10,792.48
AGC Disbursements	130,217.84	126,443.00	3,774.84
<b>Net AGC Financial Position</b>	<b>-18,510.32</b>	<b>-3,943.00</b>	<b>-14,567.32</b>
Total LLLC Receipts	373,297.81	382,241.62	-8,943.81
Total LLLC Disbursements	393,808.10	412,000.09	-18,191.99
<b>Net total LLLC Financial Position</b>	<b>-20,510.29</b>	<b>-29,758.47</b>	<b>9,248.18</b>

September expenditures exceeded receipts by approximately \$12,000. This deficit was sown from \$22,000 last month.

However, year to date expenditures exceeded receipts by over \$20,000 (up from \$8,000 last month) with the bulk of it (\$18,000) due to AGC, which hasn't begun to receive its money from the state yet.

	<b>Sunday Attendance</b>			<b>September 2011</b>	
	<b>Sunday</b>	<b>8:00</b>	<b>9:15</b>	<b>10:45</b>	<b>Total Attendance</b>
Other items of note from the Restricted Funds report:					
Money available in Planting the Seeds \$15,317.2	<b>Sept. 4</b>	25	94	72	191
Mortgage paydown receipts in 2010 \$ 4,377.00	<b>Sept. 11</b>	33	122	61	216
Mortgage paydown receipts in 2011 \$ 4,963.00	<b>Sept. 18</b>	25	102	56	183
The complete monthly report is available in the office for your review.	<b>Sept. 25</b>	29	101	51	181
	<b>Average Per Sunday Service</b>	28	105	60	193

Ask The Weatherman

By Bill Mork, Meteorologist

How active was the tropical weather in September? Five named storms, three hurricanes, and two major hurricanes formed in the Atlantic basin during the month of September. These values are above the long-term (1944-2010) average of four tropical storms, two hurricanes, and one major hurricane. Good news was that none of these storms impacted the United States. Storm names included Lee, Maria, Nate, Ophelia, and Philippe.

Does this wrap up the hurricane season? I think so, regarding threats to the local area as Gulf water temperatures have dropped and the strongest cold front of the season so far passed across our area on Wed/October 19. However, the official hurricane season continues through November 30 with the main activity confined to the Caribbean and impacts to our state pretty much limited to South Florida. The 2011 Atlantic hurricane season is considered to be a very active, above –average season. The season began with Arlene, which developed on June 29 in the Gulf of Mexico and made landfall near Veracruz, Mexico. After Arlene, the Atlantic basin featured a series of weak tropical systems, mainly forming off frontal boundaries. Thus, for the first time since reliable records began in 1851, none of the first eight tropical storms attained hurricane strength. This streak ended when Hurricane Irene formed in late August. Of 17 tropical cyclones, only five became hurricanes. Three major hurricanes include Irene, Katia, and Philippe.

Was there any wild weather in September? Yes, there was....at least in our neighborhood. The strongest thunderstorm of the year blew in from the southeast during the late afternoon on Thu/September 22 with wind damage to trees and extensive power outages in Parrish, along Rye Road, and along Upper Manatee River Road. I estimated wind gusts to 50 mph in Parrish with severe cloud to ground lightning which knocked out power for several hours. Parrish rainfall from the storm was 1.19 inches with 0.85 inches in 15 minutes. On the far side of our storm water retention pond, a trampoline was blown two houses to the west with major damage to the lanai. Monthly rainfall for September includes 6.91 inches at Parrish (97 percent of normal) and 5.90 inches at the Sarasota-Bradenton Airport (83 percent of normal).

How about that wet weekend of October 7-9? A stationary front near Key West with strong easterly flow across Peninsula Florida produced strong onshore flow with heavy rain moving east to west across the state. Winds gusts of 30 to 40 mph were common with gusts as high as 55 mph at Melbourne, Titusville, and New Smyrna Beach. Rainfall totals for the weekend include 16.79 inches at Yeehaw Junction (35 miles west of Vero Beach), 11.79 at West Kendall Tamiami Airport, 11.26 at Vero Beach, 10.05 at North Key Largo, 9.03 at Melbourne, 7.11 at Orlando, 6.24 at Miami, 6.10 at Winter Haven, 4.89 at Lakeland, 2.03 at Parrish, and 0.89 inches at the Sarasota-Bradenton Airport.

Do drought conditions continue in Florida? Our long-term drought has rapidly diminished over Peninsula Florida. Currently, 50 percent of the state is under abnormally dry conditions, 18 percent is under severe drought, and 9 percent is under extreme drought with the worst conditions across Northwest Florida.

**Mondays 10:30 AM Spiritual Growth Class Topics for November and December****JESUS & THE GOSPELS Lecture Series**

by Dr. Timothy Luke Johnson on DVD Continues!

Our men and women ready for a challenging, college level curriculum, invite you to join us for the Gospels of Mark and Matthew during November and December. Each week, we watch a scholarly lecture explaining the Gospel, discuss our own responses and insights, and read the Bible. We are enriched by sharing experiences and research to enhance our learning. Be enlightened and inspired by the Holy Spirit with us!

Oct. 31: Did Luke and Matthew borrow from Mark? The Synoptic Problem

Nov. 7 through Nov. 28: Gospel of Mark: Apocalyptic, Mystery, Teacher, Empty Tomb

Dec. 5 through Jan. 2: Gospel of Matthew: New Moses, Messiah, Torah, Insiders' Lord

No class Dec. 26

Ruth McConnell, 751-8053

**Faith Community Nursing (FCN)**

There are now SEVEN nurses on the FCN team. If there are other nurses or health care professionals who are interested in participating in FCN at LLLC, please contact De Olson at 941-896-6576.

Sunday, October 16<sup>th</sup> was the 5<sup>th</sup> month for FCN to offer blood pressure screenings in the hallway by the water fountain. The numbers taking advantage of this service are increasing. In September we served 25 after the three services.

We are planning to offer educational programs in the future. If you have expertise in specific health related topics and would like to teach a class, please let us know and we can offer it to our congregation.

Karen Hansing and De Olson attended a Diabetes Training Session on October 6<sup>th</sup> at the Carillon Outpatient Center in St. Petersburg. They received teaching tools to facilitate a Diabetes Education Program in the future at LLLC. If there is an interest, talk to De or Karen for information about future classes.

**ALERT ! WALK FOR YOUR HEALTH.** Every Tuesday and Thursday from 9:00 to 9:45 AM starting and finishing at LLLC.

There is a bulletin board in the new fellowship hall with health education information. Please stop and read it when you have a few moments.

The Suncoast Communities Blood Bank was in the parking lot at LLLC on Sunday October 16<sup>th</sup> from 9:00 AM to 12:30 PM. We thank all of you for your participation.

Our next FCN Board meeting will be 1:30 pm on Friday, November 18<sup>th</sup> at LLLC.

We have visited some members in homes, nursing homes and hospitals in response to referrals from Pastor Jeff and other members. Please tell us when you know of a member to be visited.

## To Inform Families First

The State of Florida driver's license emergency contact enrollment program allows individuals to post their emergency contacts directly to the Florida Department of Highway Safety and Motor Vehicles or by visiting the following website: [www.toinformfamiliesfirst.org](http://www.toinformfamiliesfirst.org). This program has proven to be a highly effective way to enhance the lives of Floridians by providing critically needed information to law enforcement in the event of an emergency.

If you're involved in an accident, officers will have immediate access to YOUR list of emergency contacts. They can scan your driver's license and gain immediate, but secure access to your information in their database.

It only takes about 2 minutes to register online, but registration can save you countless hours of wonder and provide peace of mind.

Just go to the website and click your mouse on the ["Click Here to Register now"](#) area on the home page. Fill in the requested information, and you are done. What a blessing to know that if, God forbid, an officer needs to contact a loved one in an emergency, it will only take a few minutes instead of innumerable hours.

If you do not have a computer, you may go to any public library or contact Bea Daly on 751-3415 to make arrangements to utilize a computer.

## We Have A Problem!

It's not a bad problem; in fact it is a good problem, and a really great opportunity. Living Lord currently has two spaces referred to as the Fellowship hall. Some make a distinction by saying the "old" Fellowship Hall meaning the space next to the kitchen or the "new" Fellowship Hall meaning the space immediately behind the new Sanctuary. This will inevitably result in confusion especially if we decide to rent space for wedding receptions, parties, banquets, etc. To avoid any possible confusion regarding what space is scheduled for an event, we have decided to hold a contest to give each space a distinct name. The contest will begin November 1, 2011 and end December 31, 2011. An anonymous committee will decide the winning names and present them to the Church Council at their January 2012 meeting for final approval. The winner(s) will receive an appropriate recognition for their winning submission at the Congregational meeting on January 29, 2012.

Additional suggestion forms will be available in the church office and in the Narthex. Please, only one submission per person.

## Name that Space Suggestion Form

Date: \_\_\_\_\_

Submitted By: \_\_\_\_\_

*(Name and telephone number)*

New Name for Old Fellowship Hall: \_\_\_\_\_

New Name for New Fellowship Hall: \_\_\_\_\_

**Drop your form in the Sunday Offertory Plate**

## **'A NIGHT IN BETHLEHEM' BRINGS CHRISTMAS TO FAMILIES'**

Living Lord Lutheran Church invites the public to its first 'A Night in Bethlehem' on Saturday, December 3 from 6:30pm-8:30pm. This family-friendly event will allow children and adults to participate in a hands-on authentic Christmas experience.

Living Lord Lutheran Church will transform into the streets of Bethlehem on the night that Jesus was born. Join the hustle and bustle of pilgrims assembling for the census. Add your name to the scroll at the census taker's office. Get your passport stamped as you travel through the town. Visit the shops and take part in the activities happening at the time. Stop to rest in a home and learn some of the customs of the day. Angels will announce the birth of the Lord and shepherds will show you the way to the stable where Mary and Joseph are with the baby Jesus. Take home priceless memories from this free event.

This is a drop-in event – reservations are not required. Parking and entry into the event are FREE.

While preparations are still underway, volunteers are still needed. If you would like to be a part of this exciting event, please contact Sue Tomasso for more information at (941) 739-2518 or via e-mail at [jtoma3822@yahoo.com](mailto:jtoma3822@yahoo.com)

*Living Lord Lutheran  
Church Presents*



**A Hands-On Holy Land Experience**

**Saturday, December 3<sup>rd</sup>, 6:30-8:30 p.m.**

**Savor the sights, sounds &  
excitement of the very first  
Christmas!**

***Free Event - Open to the Public***

**Living Lord Lutheran Church  
11107 Palmbrush Trail  
Lakewood Ranch, Florida 34202  
(Access from Lakewood Ranch Blvd. near SR 70.)**

**Living Lord Lutheran Church**  
**11107 Palmbrush Trail**  
**Lakewood Ranch, FL 34202**  
**(941) 753-9365**

**Living Lord Lutheran Church**

**“Loving, Learning, Living in Christ”**

A congregation of the Evangelical Lutheran Church in America (ELCA)

11107 Palmbrush Trail

Lakewood Ranch, FL 34202

Telephone: 941-753-9365 FAX: 941-758-9015

E-mail: [info@livinglordfl.org](mailto:info@livinglordfl.org)

Web site: [www.livinglordfl.org](http://www.livinglordfl.org)

Living Lord *Voice*: [voice@livinglordfl.org](mailto:voice@livinglordfl.org)

Newsletter Editor, Matt Hitchcock: 561-309-0862

All God's Children Preschool: 941-739-2776

Youth Director, Kristen Hitchcock: 407-257-2068

## **Sunday Worship:**

**8:00 AM Traditional Worship**

**9:15 AM Contemporary Worship**

**10:45 AM Traditional Worship**

**Sunday school: Sunday school begins at the 9:15am service in the church.**

**After the Children's sermon, the children move to the Education Building**